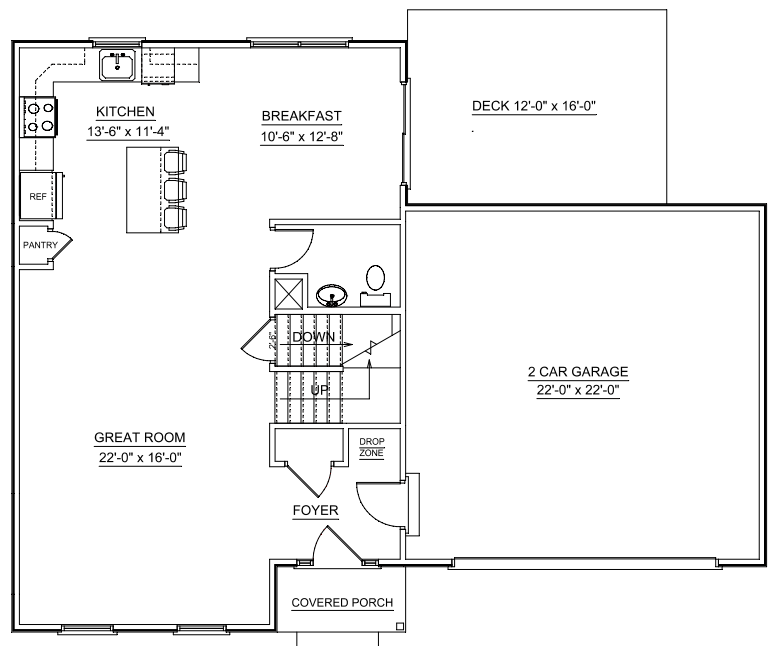


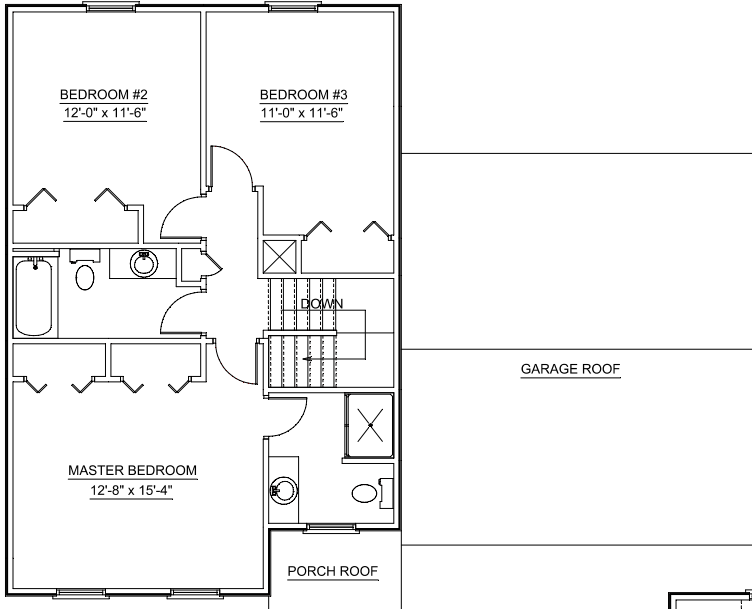
CYPRESS COLONIAL
TRADITIONAL ELEVATION 1,664 sq. ft.



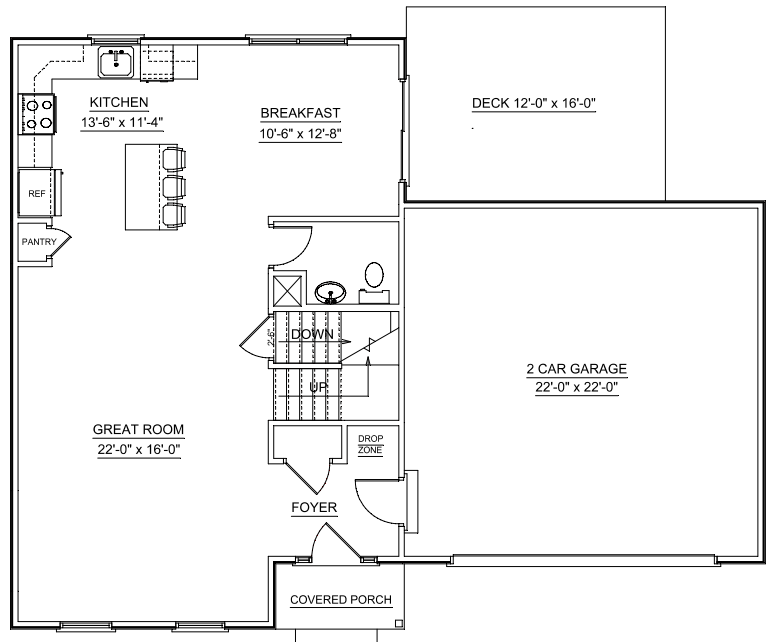
The rendering and floor plans represent the model depicted. Room dimensions are approximate and may vary according to the field conditions. Builder reserves the right to alter dimensions and may substitute any item specified with a brand of equivalent quality provided the financial and structural integrity of the building is not compromised. The specification sheet supersedes all artistic renderings. All specifications are subject to change and the Builder reserves the right to make modifications or changes without notice or obligation. All building plans may be reversed (mirror image) from what was depicted on the artistic rendering elevations or the site plan map.

NOTE: THE CYPRESS COLONIAL WILL BE BUILT WITH AN 8'-0" CEILING HEIGHT ON THE FIRST FLOOR. A 9'-0" CEILING HEIGHT IS NOT AN AVAILABLE OPTION.

NOTE: THE CYPRESS COLONIAL WILL BE BUILT WITHOUT A FIREPLACE. A FIREPLACE IS NOT AN AVAILABLE OPTION.



CYPRESS COLONIAL
CRAFTSMAN ELEVATION 1,664 sq. ft.



The rendering and floor plans represent the model depicted. Room dimensions are approximate and may vary according to the field conditions. Builder reserves the right to alter dimensions and may substitute any item specified with a brand of equivalent quality provided the financial and structural integrity of the building is not compromised. The specification sheet supersedes all artistic renderings. All specifications are subject to change and the Builder reserves the right to make modifications or changes without notice or obligation. All building plans may be reversed (mirror image) from what was depicted on the artistic rendering elevations or the site plan map.

NOTE: THE CYPRESS COLONIAL WILL BE BUILT WITH AN 8'-0" CEILING HEIGHT ON THE FIRST FLOOR. A 9'-0" CEILING HEIGHT IS NOT AN AVAILABLE OPTION.

NOTE: THE CYPRESS COLONIAL WILL BE BUILT WITHOUT A FIREPLACE. A FIREPLACE IS NOT AN AVAILABLE OPTION.