

FIRST FLOOR PLAN

VW HOMES  
 101 N. PLAINS INDUSTRIAL PARK BUILDING 1A  
 WALLINGFORD, CT 06492  
 (203) 269-4968

**THE WILLOWS - THE BALSAM**

OCTOBER 30, 2008

FIRST	1756 SF
TOTAL	1756 SF

JAMES WENTLING / ARCHITECTS

TWO PENN CENTER  
 1500 JFK BLVD, SUITE 1130  
 PHILADELPHIA, PA 19102  
 (215) 568-2551



ELEVATION A

**VW HOMES**

101 N. PLAINS INDUSTRIAL PARK BUILDING 1A  
WALLINGFORD, CT 06492  
(203) 269-4968

**THE WILLOWS - THE BALSAM**

OCTOBER 30, 2008

FIRST      1756 SF  
TOTAL      1756 SF

**JAMES WENTLING / ARCHITECTS**

TWO PENN CENTER  
1500 JFK BLVD, SUITE 1130  
PHILADELPHIA, PA 19102  
(215) 568-2551



ELEVATION B

**VW HOMES**

101 N. PLAINS INDUSTRIAL PARK BUILDING 1A  
WALLINGFORD, CT 06492  
(203) 269-4968

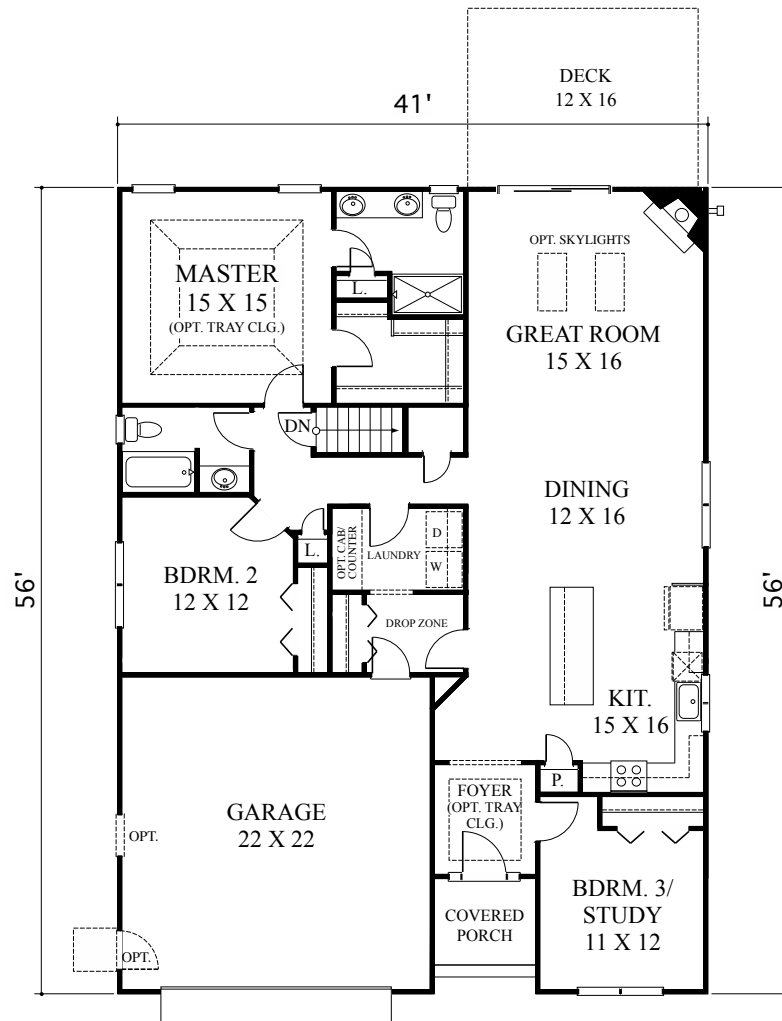
**THE WILLOWS - THE BALSAM**

NOVEMBER 3, 2008

FIRST      1756 SF  
TOTAL      1756 SF

**JAMES WENTLING / ARCHITECTS**

TWO PENN CENTER  
1500 JFK BLVD, SUITE 1130  
PHILADELPHIA, PA 19102  
(215) 568-2551



FIRST FLOOR PLAN - REVERSE

**VW HOMES**

101 N. PLAINS INDUSTRIAL PARK BUILDING 1A  
 WALLINGFORD, CT 06492  
 (203) 269-4968

**THE WILLOWS - THE BALSAM**

OCTOBER 30, 2008

FIRST 1756 SF  
 TOTAL 1756 SF

**JAMES WENTLING / ARCHITECTS**

TWO PENN CENTER  
 1500 JFK BLVD, SUITE 1130  
 PHILADELPHIA, PA 19102  
 (215) 568-2551



ELEVATION A - REVERSE

VW HOMES

101 N. PLAINS INDUSTRIAL PARK BUILDING 1A  
WALLINGFORD, CT 06492  
(203) 269-4968

THE WILLOWS - THE BALSAM

OCTOBER 30, 2008

FIRST      1756 SF  
TOTAL      1756 SF

JAMES WENTLING / ARCHITECTS

TWO PENN CENTER  
1500 JFK BLVD, SUITE 1130  
PHILADELPHIA, PA 19102  
(215) 568-2551



ELEVATION B - REVERSE

VW HOMES

101 N. PLAINS INDUSTRIAL PARK BUILDING 1A  
WALLINGFORD, CT 06492  
(203) 269-4968

THE WILLOWS - THE BALSAM

NOVEMBER 3, 2008

FIRST      1756 SF  
TOTAL      1756 SF

JAMES WENTLING / ARCHITECTS

TWO PENN CENTER  
1500 JFK BLVD, SUITE 1130  
PHILADELPHIA, PA 19102  
(215) 568-2551